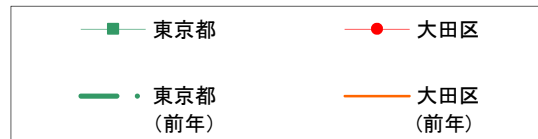


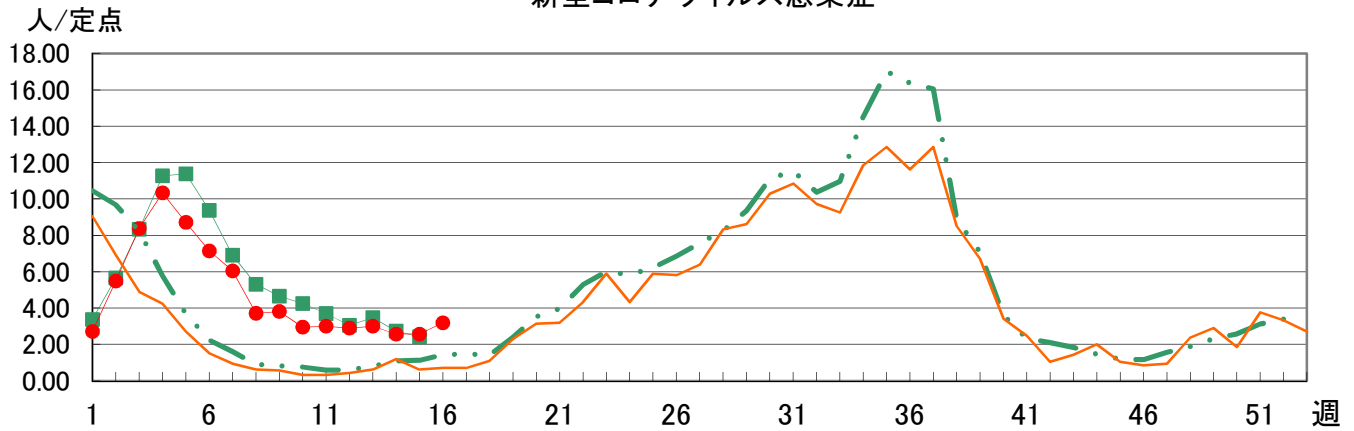
# 定点報告疾患定点当たり報告数の週別推移グラフ

[小児科定点・眼科定点]

2024 16週現在

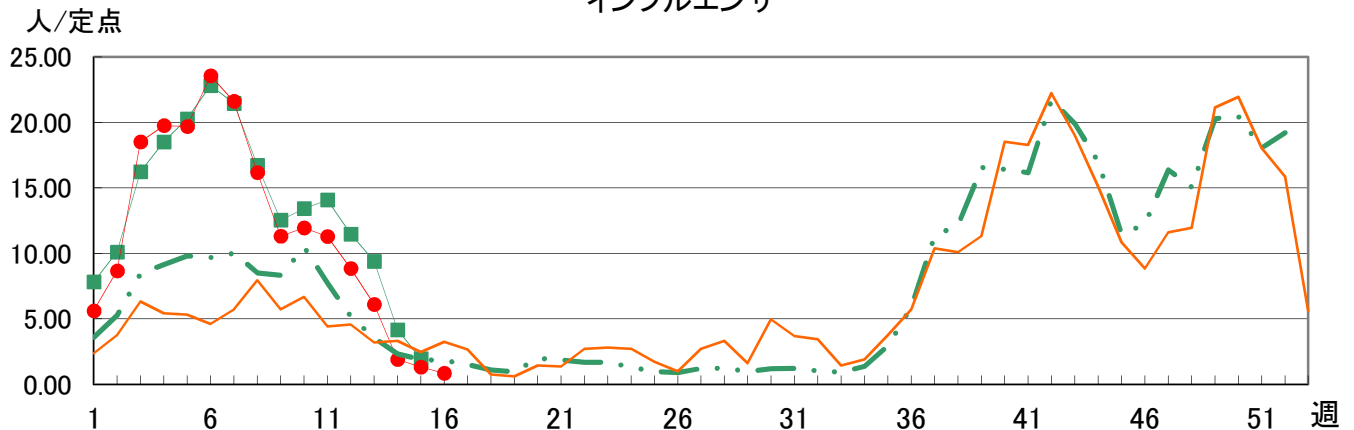


## 新型コロナウイルス感染症

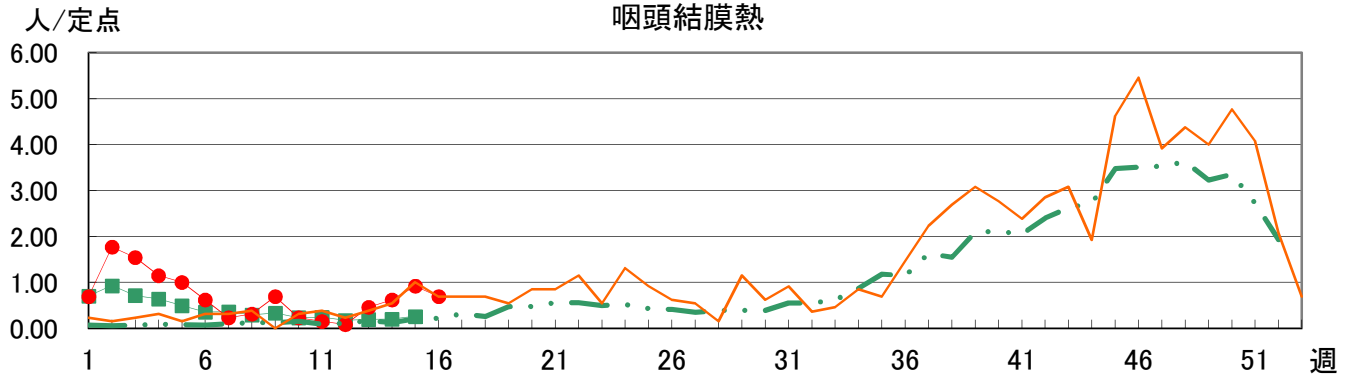


※令和5年第1週から第18週(5類移行前)は、新型コロナウイルス感染者全数を定点報告数に換算した値。

## インフルエンザ

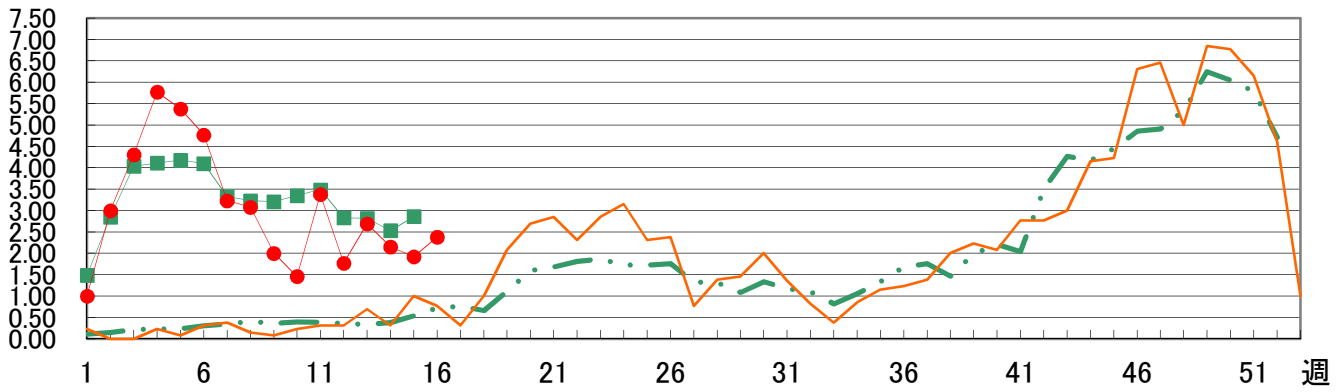


## 咽頭結膜熱



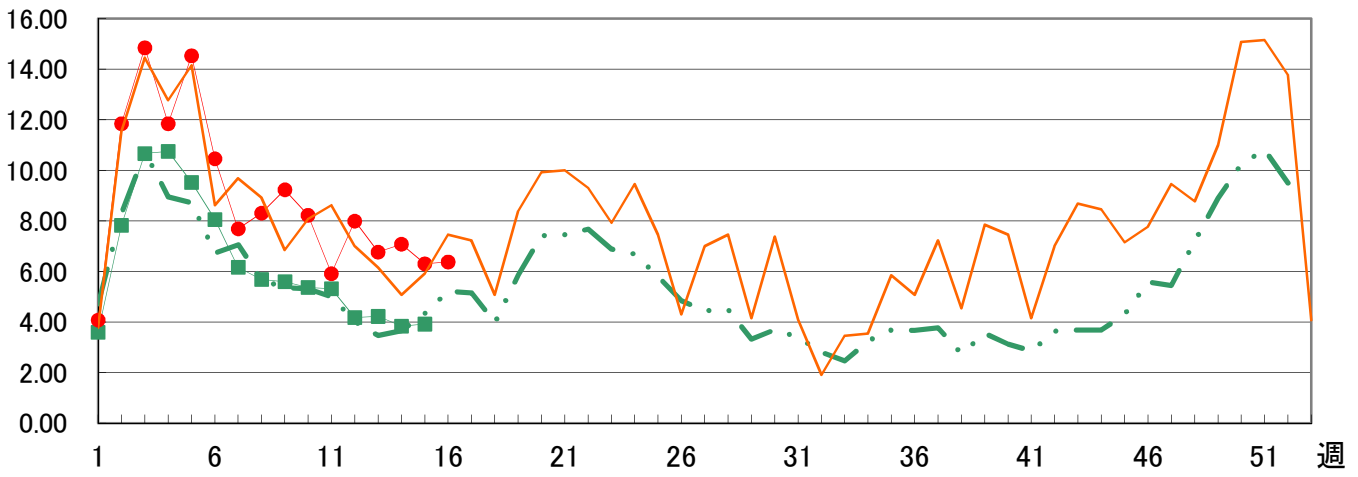
人/定点

### A群溶血性レンサ球菌咽頭炎



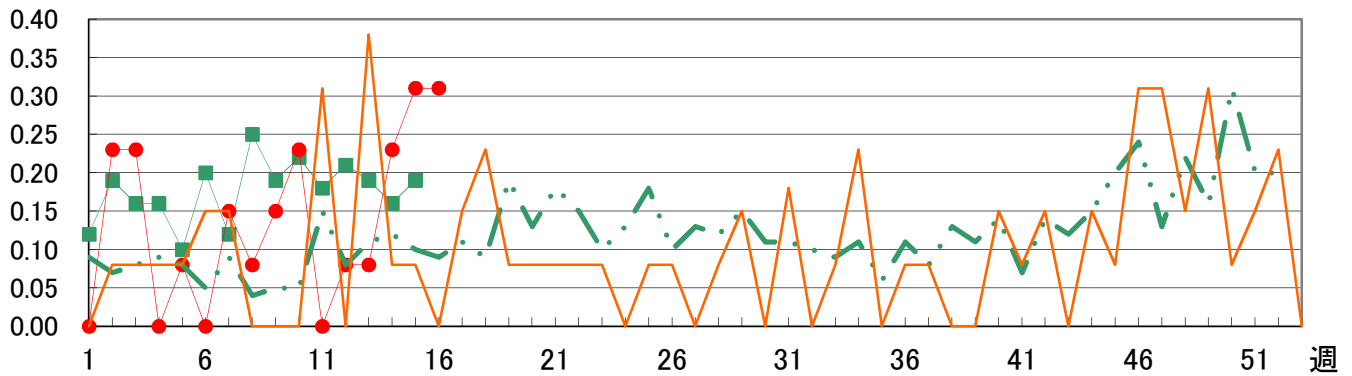
人/定点

### 感染性胃腸炎



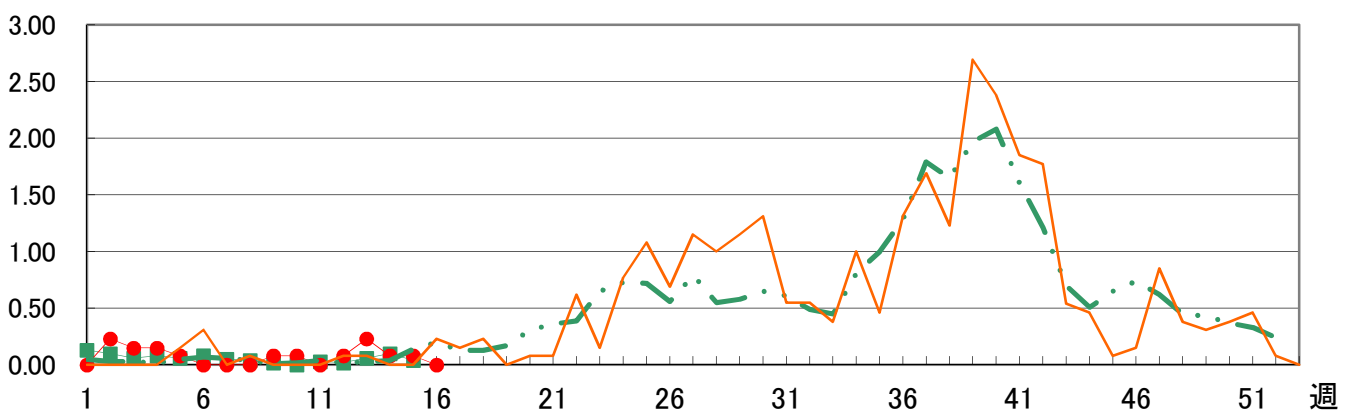
人/定点

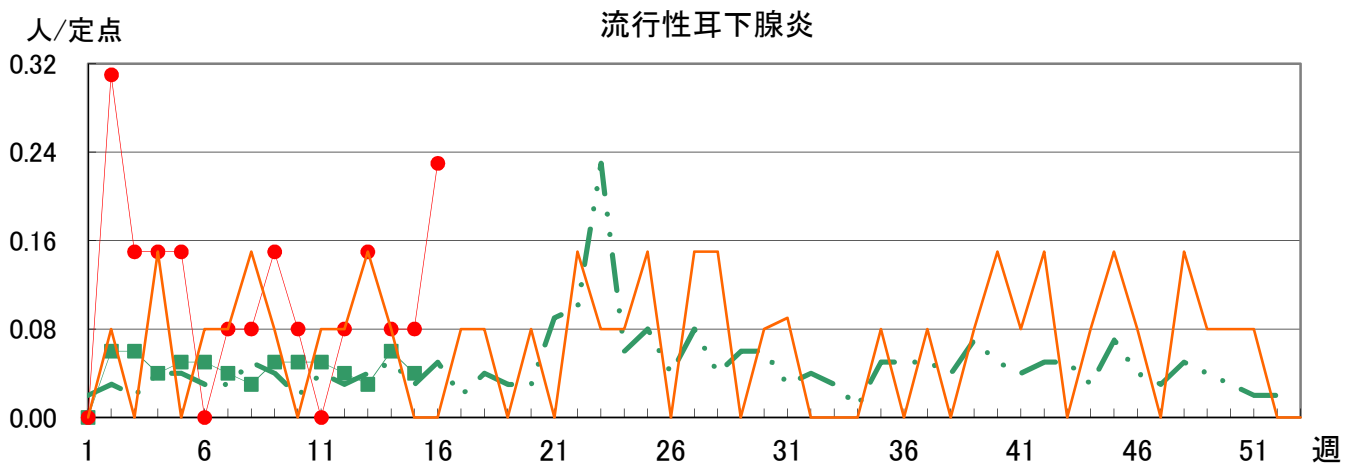
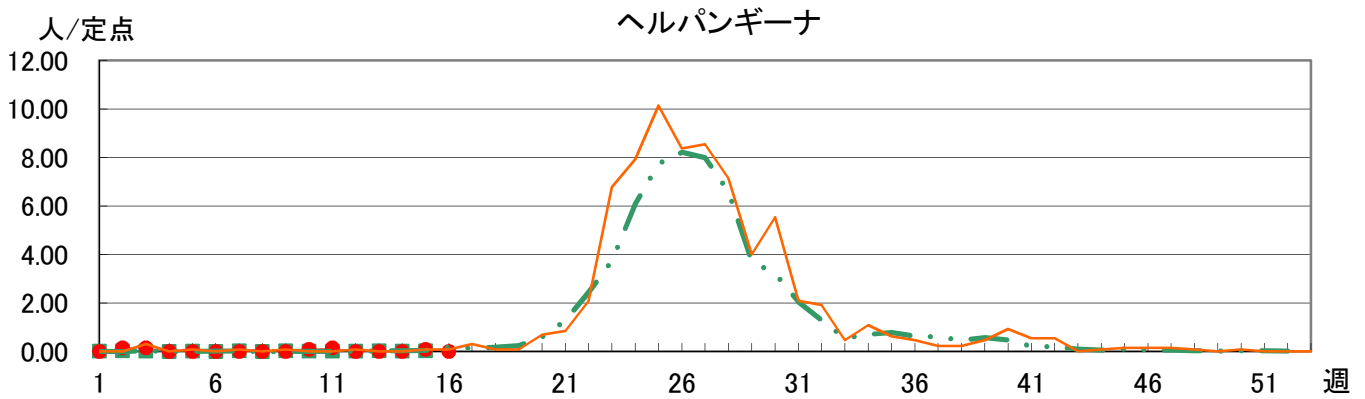
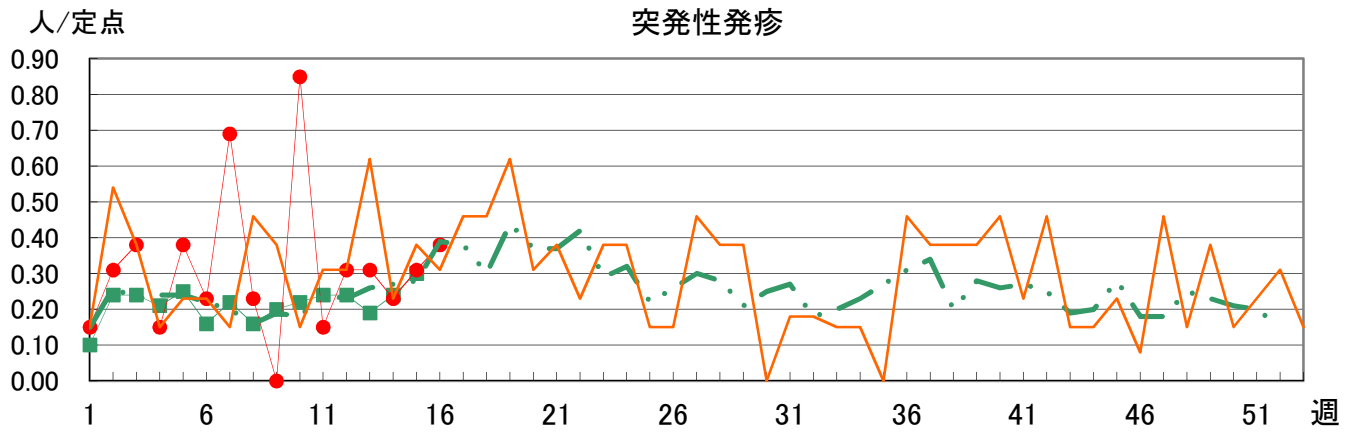
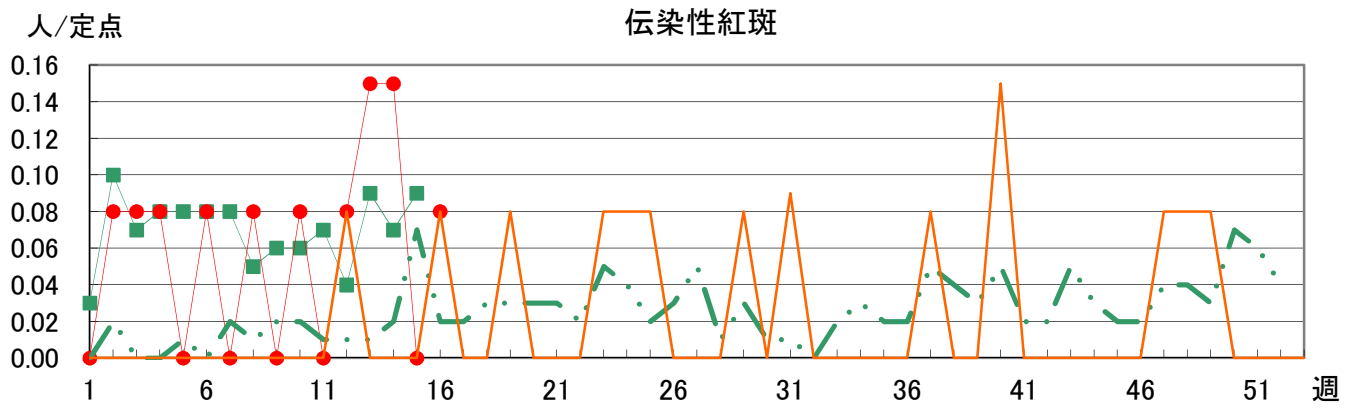
### 水痘

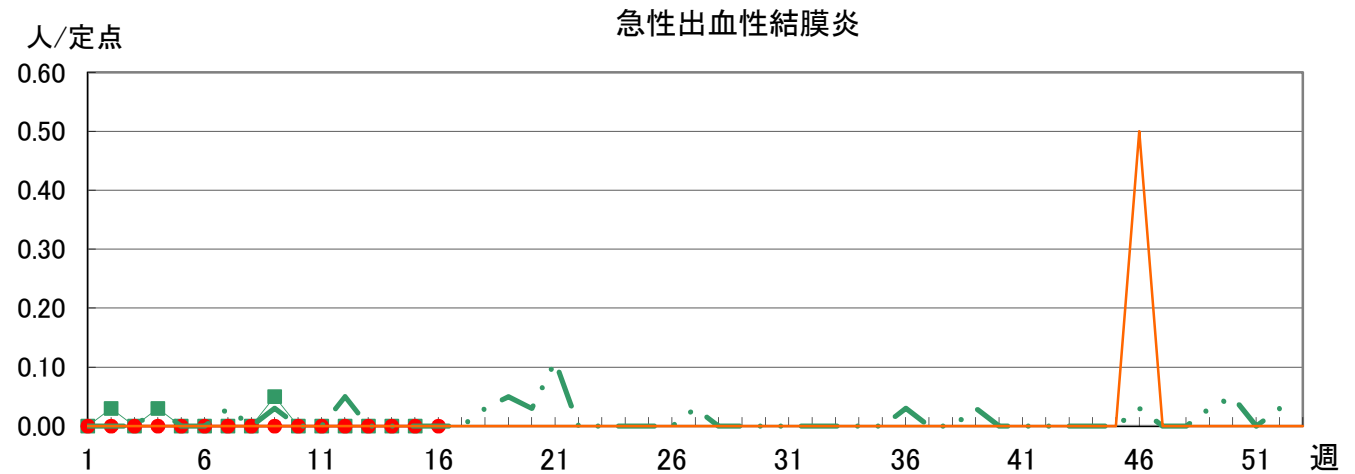
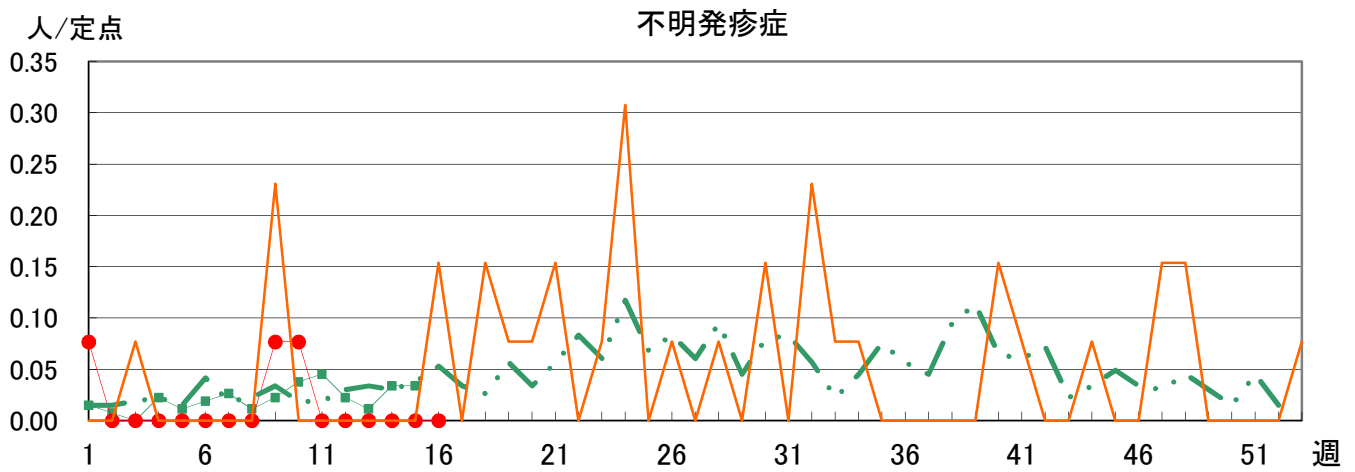
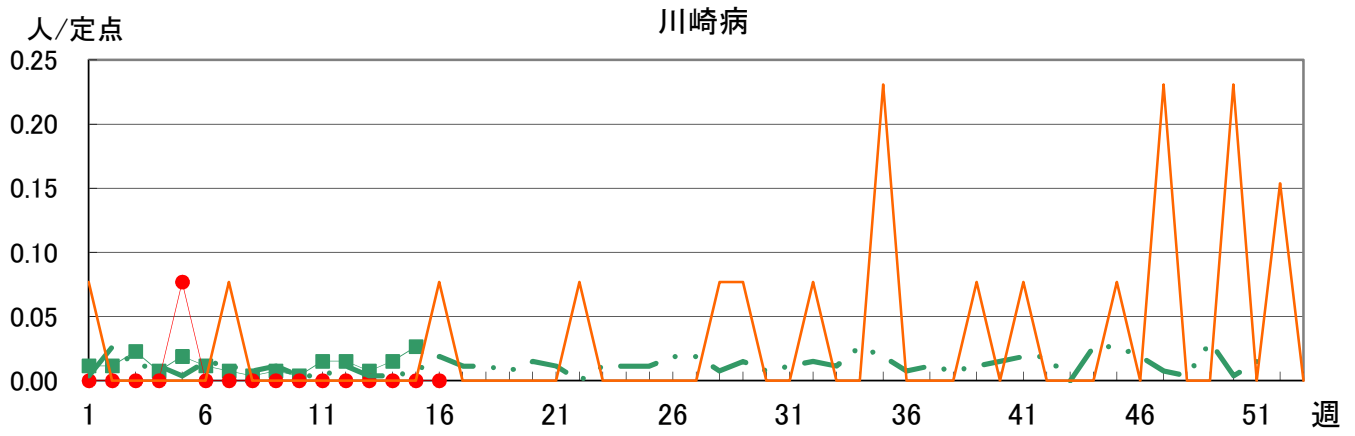


人/定点

### 手足口病

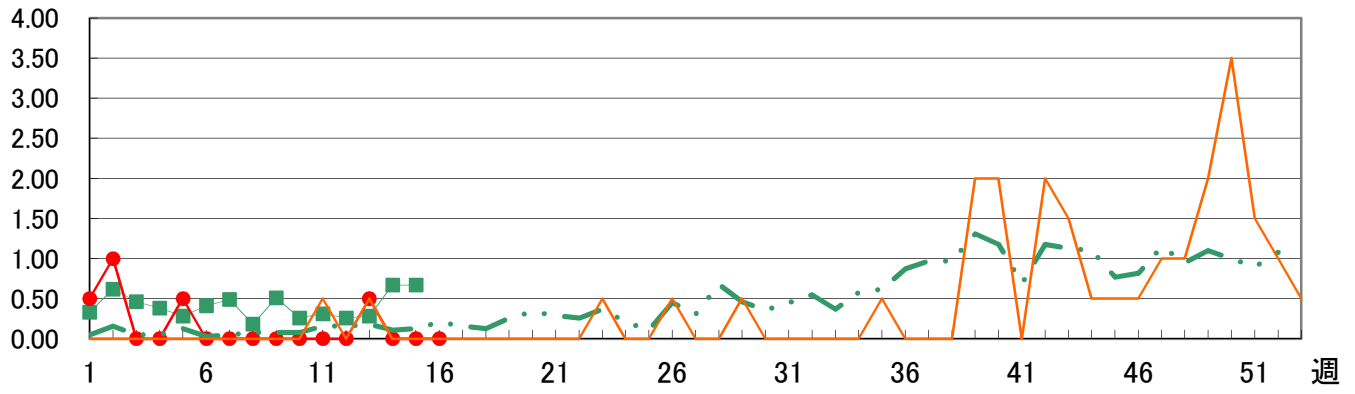






人/定点

### 流行性角結膜炎



人/定点

### RSウイルス

