



### Katsu Kaishu

(Born Yoshikuni Katsu. Also known by Rintaro, Awano-kami, and Yasuyoshi.)

Kaishu was active during a time of great turbulence from the end of the Edo Period into the Meiji Period. He is said to be one of the most enlightened men of his time. Serving as a retainer of the Tokugawa Shogun, Kaishu exerted himself towards naval training and even sailed aboard the Kanrin Maru across the oceans on its first delegation to America.

In 1868, the army of the newly established Meiji government were ready to conquer Edo; however, through Kaishu's meetings with Saigo Takamori at the official Satsuma Domain residence in Edo, as well as negotiations at Ikegami Honmonji Temple, terms of a peaceful surrender were discussed and accepted, leading to the famous "bloodless surrender of Edo Castle".

# Ota City Katsu Kaishu Memorial Museum



## Former Seimei Bunko Library National Registered Tangible Cultural Property

The Seimei Bunko Library was opened by the Seimeikai Foundation in 1933 many years after Kaishu's death. It was opened as a means to preserve both Kaishu's grave and his villa "Senzoku-ken", as well as to collect and store relevant books and documents for exhibitions and lectures. It became a National Registered Tangible Cultural Property in 2000 and became a city-owned establishment as of 2012. The building is very modern and was built incorporating various western designs and construction techniques; the 4 large pillars on the front face of the building above the main entrance appear to be greatly influenced by Neo-Gothic architecture, and much of its interior takes its inspirations from Art Deco.

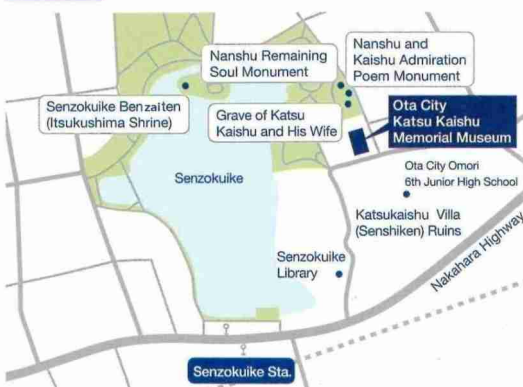


The Seimei Bunko Library when it was first opened (photo: Senzoku Seimeikai Association)



Reformed Exterior

### Access



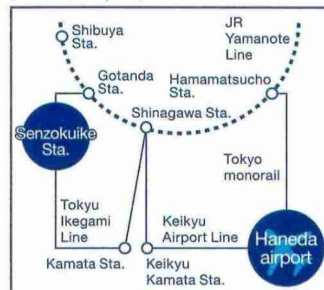
#### By train:

- 6-minute walk from Senzoku-ike Station, Tokyu Ikegami Line

#### By bus:

- 6-minute walk from "Senzokuike" bus stop, Tokyu Bus

#### (Public transport)



\* There is a parking lot for people with disabilities.

### Information

Opening Hours : 10:00 - 18:00 (entrance closes at 17:30)

Closed Days : Mondays (if a national holiday falls on a Monday, closed the following day instead)  
New Year holidays and for maintenance

Admissions : General: 300 yen, Elementary and Junior High School students: 100 yen  
Groups of 20 or more: 20% off (240 yen / 80 yen)

\* Admission is free for people with a Shintai Shogaiisha Techo (Certificate of the Physically Disabled), Ai-no-Techo (Certificate of the Intellectually Disabled), Ryokyu Techo (Certificate of Rehabilitation) or Saishin Shogaiisha Hoken Fukushi Techo (Certificate of the Mentally Disabled), and for one person accompanying them.  
\* 20% off on admissions for seniors 65 and over (240 yen). Proof of age is required.

### Contact Us

2-3-1 Minami-Senzoku, Ota-ku, Tokyo 145-0063

TEL: 03-6425-7608

Katsu Kaishu Memorial Museum Search

Grand Opening: September 7, 2019 (Saturday)

General Admissions on Sept. 7 will be from 13:00



## Katsu Kaishu's beloved Senzokuike Pond.



## Katsu Kaishu Memorial Museum Preservation and Utilisation of Cultural Properties

The Katsu Kaishu Memorial Museum, the first of its kind in Japan, was opened to preserve and further develop the former Seimei Bunko Library (National Registered Tangible Cultural Property). The museum aims to introduce local history, whilst honouring and celebrating the memory of Katsu Kaishu, his thoughts and achievements, and his relationship with Ota City.

### Katsu Kaishu and Ota

In the late Meiji Period, Kaishu built his villa "Senzoku-ken" on the banks of Senzokuike Pond and decided where he would like to eventually be buried.

On the eve of the planned attack on Edo, Kaishu had travelled past Senzokuike Pond on his way to Ikegami Honmonji Temple, where he negotiated the peaceful surrender of Edo with the newly established Meiji government forces. It is possibly the memory of that moment which attracted Kaishu so strongly to Senzokuike Pond. To this day, Kaishu remains at rest on the banks of Senzokuike Pond.

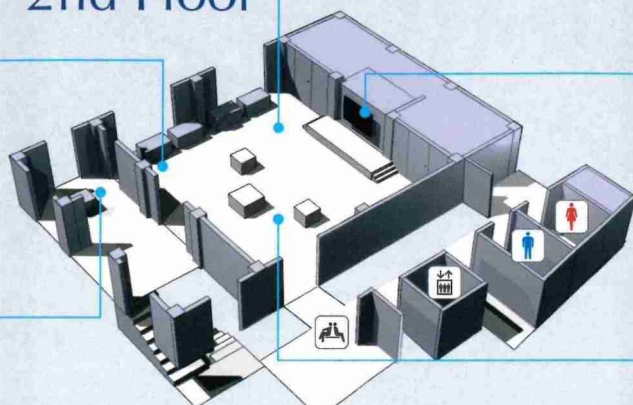


Senzoku-ken

## Floor map

## Let's learn about Katsu Kaishu, a man of sincerity.

### 2nd Floor



#### Kaishu Zone

Have fun while learning! In this room you will find numerous exhibitions with documents about Kaishu, as well as a touch panel device which you can use to look up people with connection to Kaishu, or even try your hand at a Kaishu related quiz.

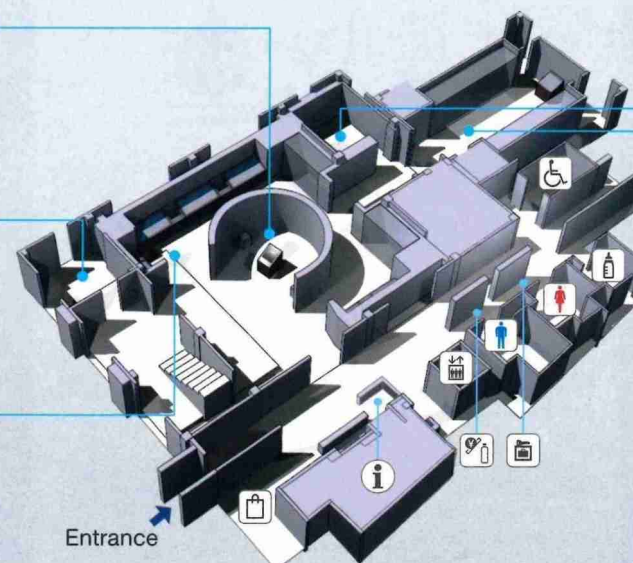


#### Former Guest Room

This room has been refurbished and restored to look as it did at the time when it was used as a guest room for special guests. It is also where the bust of Kaishu is kept on display.

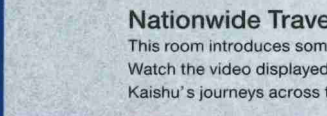


### 1st Floor



#### Kaishu's Brain

Come closer to understanding the mind and character of Katsu Kaishu. Look at the various writings by Kaishu to discover what exactly he was thinking at the time.



#### Nationwide Travel

This room introduces some of the places Kaishu visited. Watch the video displayed on the monitor and learn about Kaishu's journeys across the country.



#### Kaishu Chronicle

Look at genuine documents and items and trace Kaishu's steps through life from the end of the Edo period into the Meiji period.

#### Senzokuike Pond Zone

In this room there are exhibitions introducing Kaishu's beloved Senzokuike Pond, a diorama of his villa "Senzoku-ken" and more. There is also a touch panel device which you can use to search through the museum collection.



#### Large Screening Room

There will be screenings of the following 3 videos:  
• How Tokyo Came To Be / Tokyo wa koushite umareta (12 minutes)  
• 4 Seasons of Senzokuike Pond / Senzokuike no shiki (6 minutes)  
• Kaishu's Days of Youth / Wakakihi no Kaishu (6 minutes)



#### Seimei Bunko Zone

Have a look at the scale model of the Seimei Bunko Library, the building which is now being used for the Katsu Kaishu Memorial Museum. Here it will be explained how the building was previously used and how lectures would have been held.



#### Time Room

Travel back in time and experience what it must have been like to board the Kanrin Maru and sail the vast oceans (activity using CGI).



#### Special Exhibition Room

Themes for the special exhibitions are decided periodically and then displayed here.



## Nearby Historic Spots



### Grave of Katsu Kaishu and His Wife

Kaishu passed away January 19, 1899. The five-ring pagoda form used for Kaishu's gravestone is said to have been designed by Kaishu himself whilst he was still alive. Carved into the stone on the water ring element of the pagoda - the spherical portion, second up from the bottom - are the characters for his name, *ka* and *shu*.

### Nanshu Remaining Soul Monument

This stone monument was built in 1879 in Kinogawa, Minami-Katsushika-gun to mourn and commemorate Saigo Takamori (Nanshu). Engraved into the stone is a poem written by Saigo on the front and Kaishu's memories of Saigo on the back.



### Nanshu and Kaishu Admiration Poem Monument

In 1937, a group of volunteers began plans for the monument. Engraved on the stone is a poem written by Tokutomi Soho, a devout follower of Kaishu, praising the great achievements of Saigo and Kaishu.

